

1000LB Motorcycle lift (Hydraulic) Instruction manual

Important:

Please read this instruction manual carefully. Note the safety instructions and warnings. Use the product correctly and with care for the purpose for which it is intended.

Parameter:

Capacity: 1000 LBS
 min height: 180 MM
 max height: 780 MM

Features

1. Air or Hydraulic Powered Mechanism
2. Removable plate for increased access, such as rear wheel removal
3. Adjustable foot for increased safety and stability
4. Safety set increases safety against accidental descent of table

Operation

1. Ensure that the table is at the minimum height, and that the ramp is in place.
2. Lock off the release valve, steadily pump the foot pedal until the table reaches a required height, or using the air pump to lifting the motorcycle lift. Connect the hose to the air feeder directly before operate the air pump, then press valve to rise the table, and loosen the valve to stop.
3. Lock the safety set at the required height. Then repair the motorcycle.
4. After repairing, remove the safety set.
5. Steadily pump the foot pedal, Let the table lower
6. Remove the motorcycle from its stand and wheel it off the back of the table via the ramp.

Maintenance

1. The mechanical parts of the lift, such as the foot pedal and release shafts should be occasionally lubricated with heavy oil or grease.
2. Protect the lift cylinder from dirt or dust. If it becomes dirty, wipe it off with a clean cloth.
3. Maintain and store the lift in a reasonably protected environment. Do not expose to rain or excess moisture. Protect from salt water or other corrosive materials.

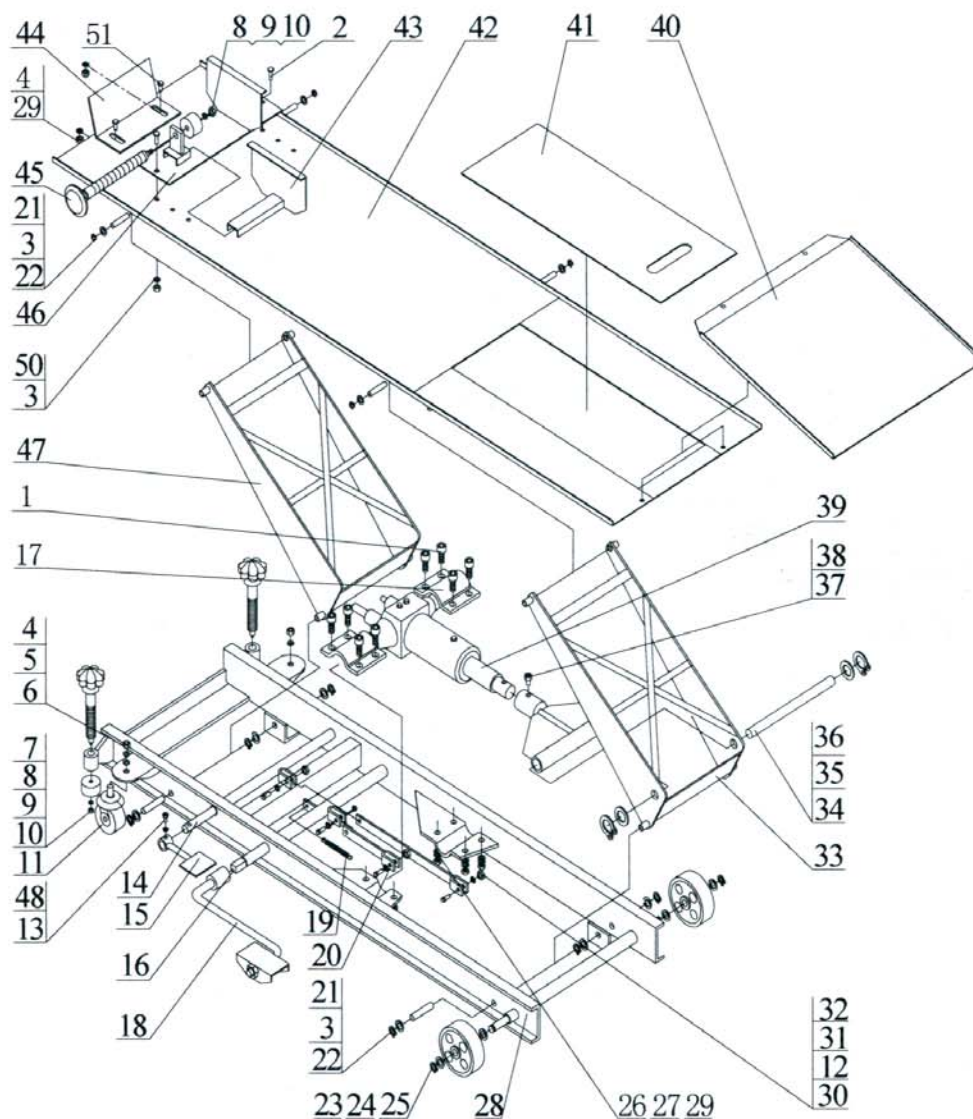
Warning

1. Always check the lift before use.
2. Do not operate under the table, keeping hands and body away from the table when it's operating. The air hose should be pulled from bottom, not on the table.
3. When lowering the table, take care to control the speed of descent.
4. When the table is at its highest elevated position, do not attempt to pump the table higher as this can damage the mechanism.

Limora Zentrallager
 Industriepark Nord 21
 D- 53567 Buchholz
 Tel: 49 (0) 2683- 97 99 0
 E-Mail: Limora@Limora.com
 Internet: www.Limora.com

Filialen:
 • Aachen • Berlin • Bielefeld
 • Düsseldorf • Hamburg
 • Köln • Stuttgart

REPAIR PARTS:



Limora Zentrallager
 Industriepark Nord 21
 D- 53567 Buchholz
 Tel: 49 (0) 2683- 97 99 0
 E-Mail: Limora@Limora.com
 Internet: www.Limora.com

Filialen:
 • Aachen • Berlin • Bielefeld
 • Düsseldorf • Hamburg
 • Köln • Stuttgart

PARTS LIST

No.	Description	Qty	No.	Description	Qty
1	Bolt M10×25	8	27	Washer 10	8
2	Bolt M12×30	2	28	Frame assembly	1
3	Washer 12	18	29	Nut M10	10
4	Washer 10	4	30	Bolt M8×35	4
5	Washer 10	2	31	Oil Release link	1
6	Nut M10	2	32	Nut M8	4
7	Support	2	33	Rear arm support component	1
8	Adjusting screw	2	34	Shaft	1
9	Washer 6	2	35	Washer 20	2
10	Nut M6	2	36	Elastic retainer ring 20	2
11	Universal wheel	2	37	Bolt M10×10	1
12	Washer 8	4	38	Connection assemble	1
13	Bolt M8×18	1	39	Pump	1
14	Release valve spindle	1	40	Ramp	1
15	Release foot pedal	1	41	Moveable plate	1
16	Pump piston spindle	1	42	Platform	1
17	Fixed plate	2	43	Adjustable clamp assemble	1
18	Release foot pedal	1	44	Productive pole	1
19	Spring	1	45	Clamp pole	1
20	Link	1	46	Clamp bottom plate	1
21	Pin	8	47	Front arm support component	1
22	Elastic retainer ring 12	16	48	Pin	1
23	Straight Wheel	2	49	Safety bar	1
24	Washer 14	2	50	Nut M12	2
25	Elastic retainer ring 14	2	51	Bolt M10x30	2
26	Washer 10	8			